



## Tripod Turnstile

# DT2000

## Specification

Product Size: 200\*200\*980mm

Pass Width: <=550mm

Thickness: SS 1.2mm

Housing Material: Stainless Steel 304

Arm Material: Stainless Steel Cylinder pole

Pass rate: 20-25 Persons/minute

Power Supply: 100-240V (AC)

Operational Voltage: 24V (DC)

Max Power Consumption: 35W

Frequency: 50-60 Hz

Working Temperature: -25 to +70°

Operating Modes: Bi-directional with Single passage

Operating Time: 0.2 Seconds

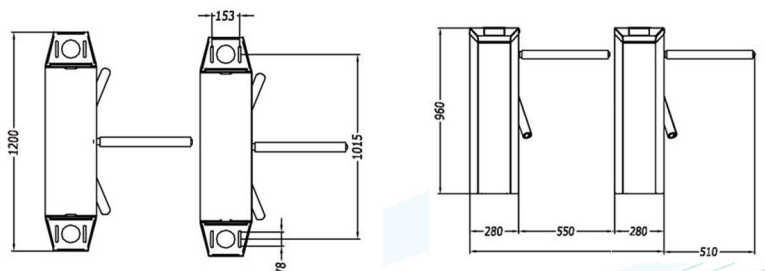
MCBF: 3,000,000cycles

### OPERATING MODES:

- Single passage in the set direction
- Bi-directional single passage
- Free passage in the set direction
- Always free or locked

## Feature

- Molded Turnstile Machine Core, Power Supply Box, with advance smart sleek turnstile controller.
- Use of RFID IC cards, ID cards, Barcode or magnet-ic cards as automatic identification system and achieve access attendance, fees or function.
- A direction indicator showed that the pedestrian access to the current status and guide pedestrian correctly and in smooth passage.
- Semi-auto mode: After reading card the passenger pushes the arm by hand until he goes through the barriers and the arm arrives in home position.
- Single or bi-directional function in mechanical and electrical versions.
- Automatic reset of barrier arms after each passage.



Disclaimer: Brief specifications are mentioned here. Specifications may change without prior notice. Customers are advised to check with us before purchase. Actual product may differ slightly to that depicted for ongoing product development